

PART OF THE N.W. 1/4 OF SECTION 33, T.7N., R.1W., S.L.B. & M.
WILLOWBROOK SUBDIVISION NO. 2 AMENDED PLAT

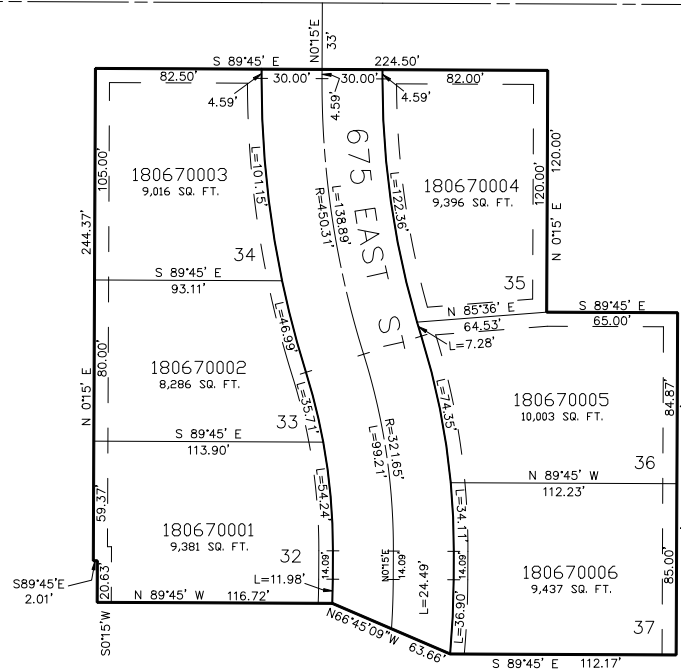
TAXING UNIT: 10

AMENDED PLAT
 LOTS 32 — 37
 IN NORTH OGDEN CITY
 SCALE 1" = 50'

SEE PAGE 42

2550 NORTH STREET

SEE PAGE 42



SEE PAGE 42

SEE PAGE 65

7' UTILITY & DRAINAGE EASEMENTS EACH
 SIDE OF PROPERTY LINES AS INDICATED
 BY DASHED LINES EXCEPT AS OTHERWISE
 SHOWN.

FOR COMPLETE ENG DATA SEE
 ORIGINAL DEDICATION PLAT IN
 BOOK 25, PAGE 53 OF RECORDS.